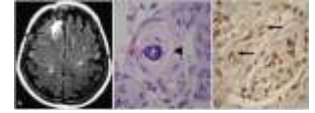


# Rx INTERFERON BETA-1A

(This form of interferon is used to treat multiple sclerosis (MS))



## USES

This form of interferon is used to treat multiple sclerosis (MS). It is not a cure for MS but has been shown to slow the advancement of the disease.

## OTHER USES

This drug may also be used for the treatment of certain cancers, immune system disorders, or viral infections.

## HOW TO USE

Learn all preparation and usage instructions, including how to inject the drug, and review the Medication Guide with your doctor or pharmacist. Inject this medication under the skin (subcutaneously) usually 3 times a week; or as directed by your doctor. The dosage is based on your medical condition and response to therapy but should be given at approximately the same time of the day, preferably in the afternoon or evening. Taking fever/pain-reducing medications (e.g., acetaminophen, ibuprofen) may be needed to help treat common side effects. Consult your doctor or pharmacist. Before using, check this product visually for particles or discoloration. If either is present, do not use the liquid. Learn how to store and discard needles and medical supplies safely. Consult your pharmacist.

## SIDE EFFECTS

Flu-like symptoms (e.g., headache, nausea, fever, chills, fatigue, muscle aches/pain) and irritation at the injection site may occur. If any of these effects persist or worsen, notify your doctor promptly. Flu-like symptoms can be treated with fever reducers and pain relievers such as acetaminophen or ibuprofen. Consult your doctor or pharmacist. Tell your doctor immediately if any of these serious side effects occur: stomach/abdominal pain, chest pain, swelling of the ankles/feet, sudden weight gain. Tell your doctor immediately if any of these unlikely but serious side effects occur: unusual or severe mental/mood changes (e.g., suicidal thoughts, severe depression), seizures, signs of infection (e.g., persistent sore throat), easy bruising/bleeding, extreme fatigue/weakness, cold or heat intolerance, gradual change in weight (without a change in diet or exercise), dizziness or loss of coordination, rapid or irregular heartbeat, yellowing eyes or skin, dark urine. Tell your doctor immediately if any of these highly unlikely but very serious side effects occur: vision problems, increased urination. An allergic reaction to this drug is unlikely, but seek immediate medical attention if it occurs. Symptoms of an allergic reaction include: rash, itching, swelling, dizziness, trouble breathing. If you notice other effects not listed above, contact your doctor or pharmacist.

## PRECAUTIONS

Tell your doctor your medical history, especially of: psychiatric disorders (e.g., depression), liver problems, heart disease, history of alcohol dependence, seizure disorders, thyroid disorders (hypo or hyperthyroidism), blood disorders, any allergies (especially to other interferon products or albumin). To minimize dizziness and lightheadedness, get up slowly when rising from a seated or lying position. This medication is not recommended for use during pregnancy because of the potential to cause fetal harm and the risk of serious side effects for a pregnant woman. Consult your doctor for more details. It is not known whether this drug passes into breast milk. Because of the potential risk to the infant, breast-feeding while using this drug is not recommended.

## DRUG INTERACTIONS

Tell your doctor of all prescription and nonprescription medication you may use, especially: other drugs that may suppress the immune system (e.g., azathioprine, cyclosporine, prednisone). Do not start or stop any medicine without doctor or pharmacist approval.

## OVERDOSE

If overdose is suspected, contact your local poison control center or emergency room immediately. US residents can call the US national poison hotline at 1-800-222-1222. Canadian residents should call their local poison control center directly.

## MISSED DOSE

If you miss a dose, contact your doctor to establish a new dosing schedule.

## STORAGE

Store in a refrigerator between 36 and 46 degrees F (2 and 8 degrees C). If a refrigerator is temporarily unavailable, keep this product in a cool place (below 77 degrees F or 25 degrees C) for up to 30 days away from heat and light.

**Note :** This product information is intended only for residents of the India. Taj Pharmaceuticals Limited, medicines help to treat and prevent a range of conditions—from the most common to the most challenging—for people around the world.

**Taj DRUG** WORLD 

**Taj Group of Companies** INDIA

**Taj Pharmaceuticals Ltd.**

Phone : General EPA BX : 91 - (0)22 - 26374592/92 91,  
(0)22 - 26374592/93 91 - (0)22 - 30601000,  
Fax : 91-(0)22-26341274

Revised November 2010